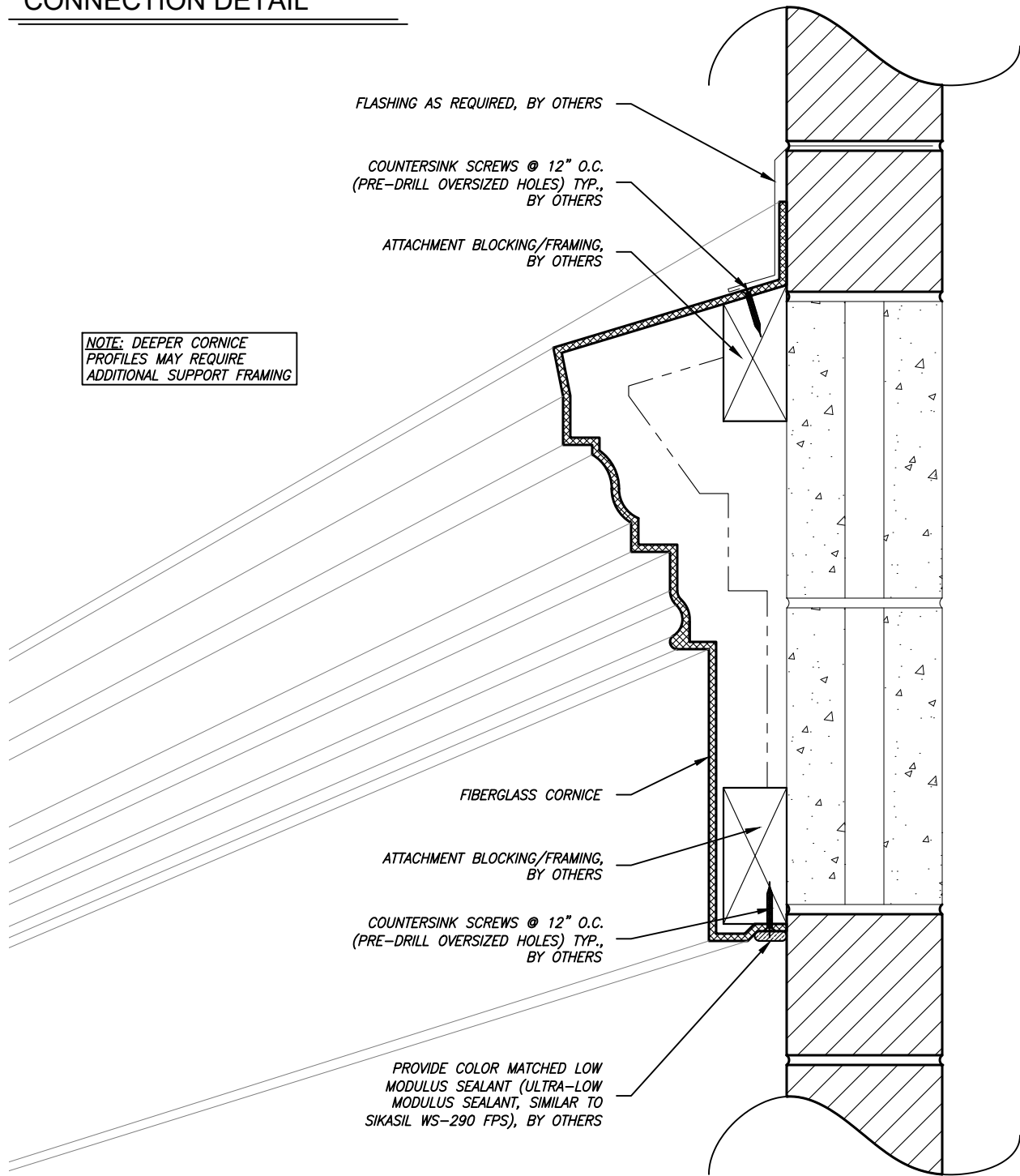


**WOOD BLOCKING
CONNECTION DETAIL**



CORNICE
SHEET NO.
SD-1
2025

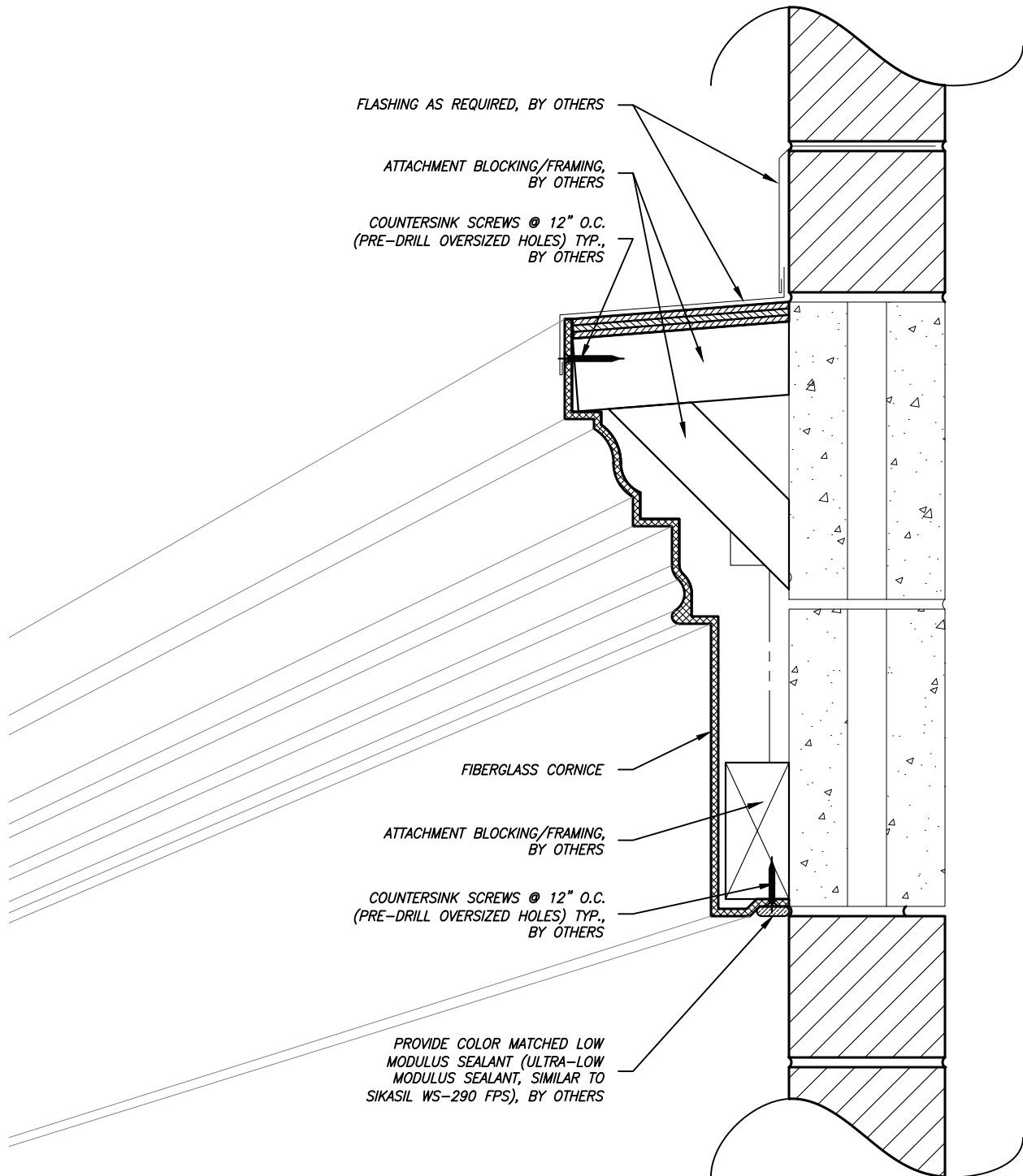
CONNECTIONS



ARCHITECTURAL FIBERGLASS, INC.

8300 BESSEMER AVE., CLEVELAND, OHIO 44127-1839
(216) 641-8300 - FAX:(216) 641-8150
www.fiberglass-afi.com

**SUPPORT FRAMING
CONNECTION DETAIL**



CORNICE
SHEET NO.
SD-2
2025

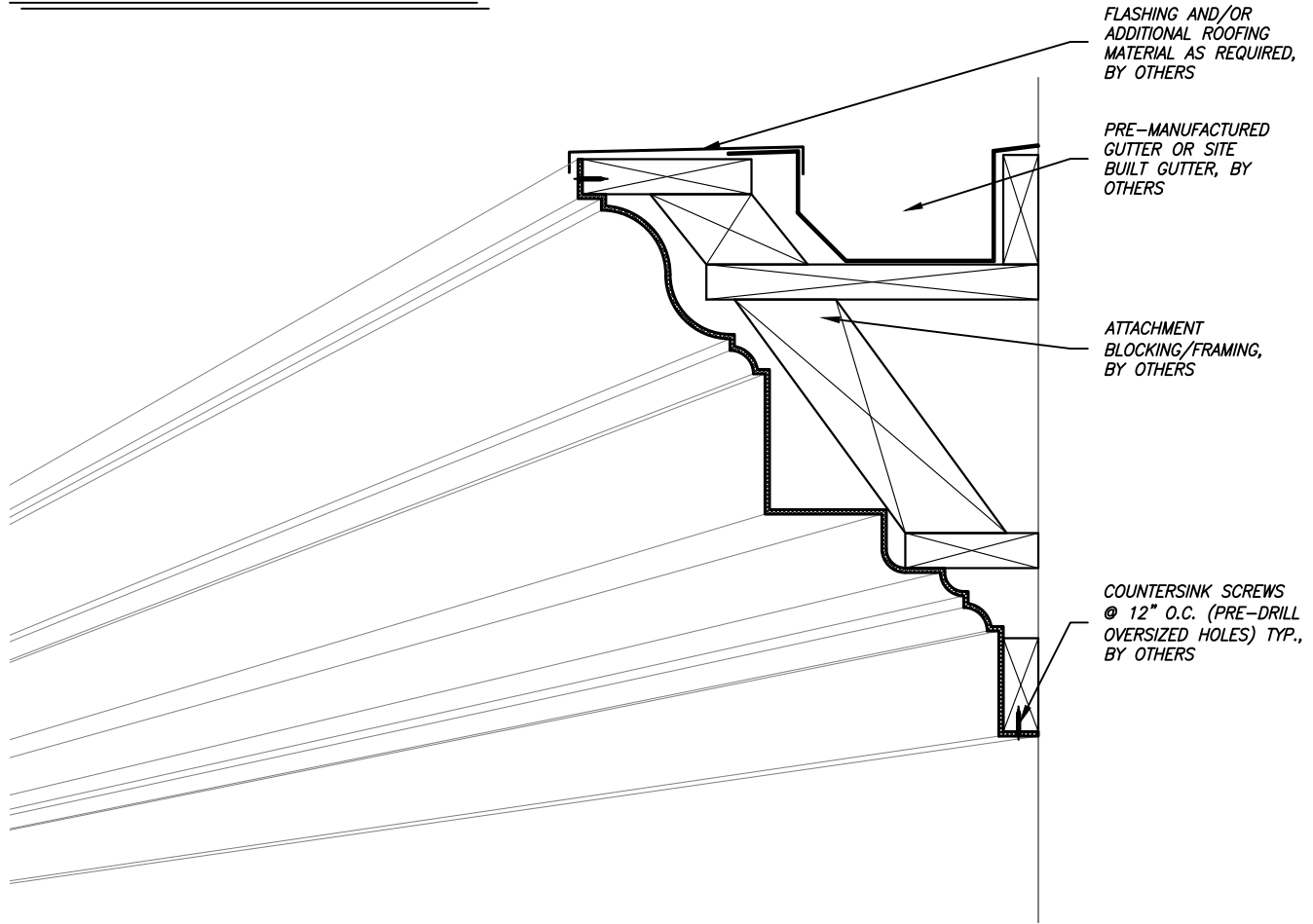
CONNECTIONS



ARCHITECTURAL FIBERGLASS, INC.

8300 BESSEMER AVE., CLEVELAND, OHIO 44127-1839
(216) 641-8300 - FAX:(216) 641-8150
www.fiberglass-afi.com

TYPICAL CORNICE
WITH GUTTER INSTALLATION



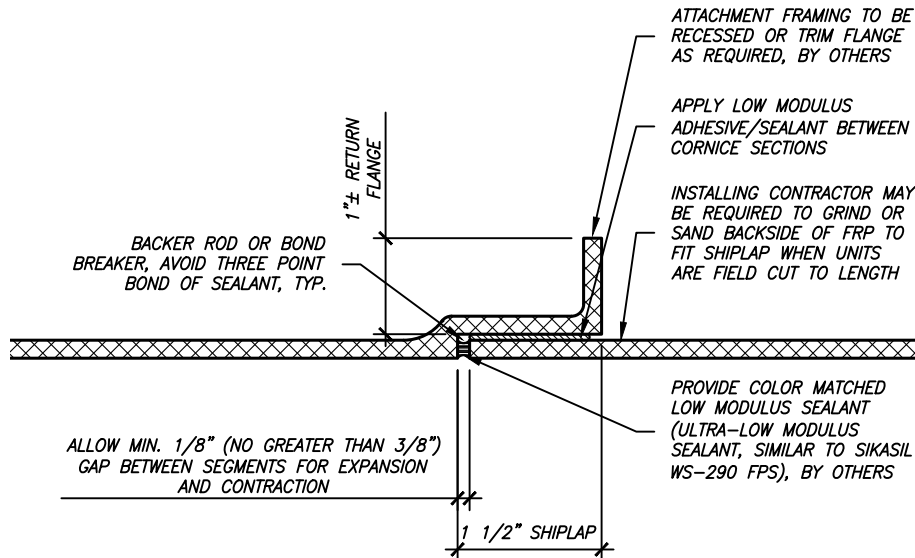
CORNICE
SHEET NO.
SD-3
2025

INSTALLATION
WITH GUTTERS

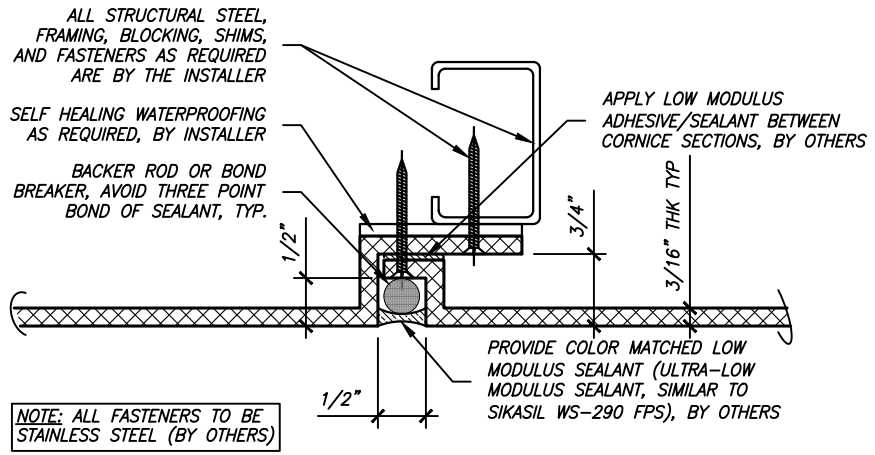


ARCHITECTURAL FIBERGLASS, INC.

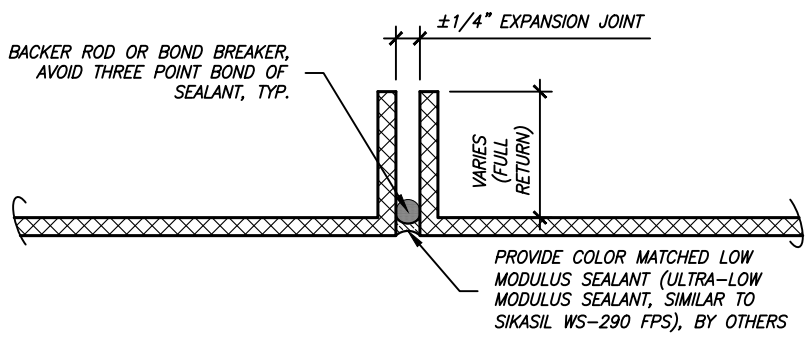
8300 BESSEMER AVE., CLEVELAND, OHIO 44127-1839
(216) 641-8300 - FAX:(216) 641-8150
www.fiberglass-afi.com



TYPICAL SHIPLAP DETAIL



TYPICAL REVEAL DETAIL (SPECIAL ORDER)



TYPICAL BUTT JOINT DETAIL

CORNICE
SHEET NO.
SD-4
2025

TYPICAL
JOINT DETAILS

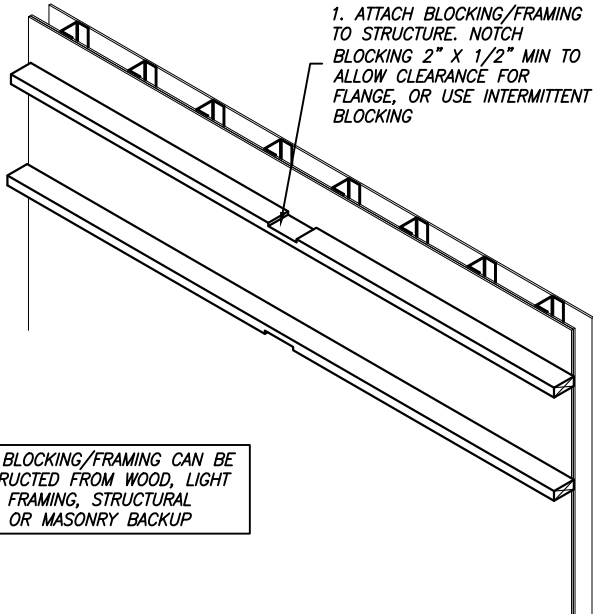


ARCHITECTURAL FIBERGLASS, INC.

8300 BESSEMER AVE., CLEVELAND, OHIO 44127-1839
(216) 641-8300 - FAX:(216) 641-8150
www.fiberglass-afi.com

TYPICAL INSTALLATION FOR CORNICE WITH SHIP LAP JOINTS

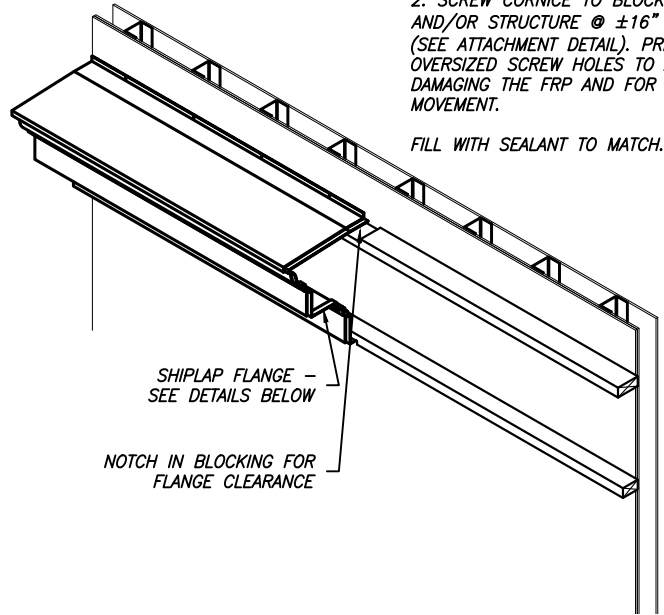
1. ATTACH BLOCKING/FRAMING TO STRUCTURE. NOTCH BLOCKING 2" X 1/2" MIN TO ALLOW CLEARANCE FOR FLANGE, OR USE INTERMITTENT BLOCKING



NOTE: BLOCKING/FRAMING CAN BE CONSTRUCTED FROM WOOD, LIGHT GAUGE FRAMING, STRUCTURAL STEEL, OR MASONRY BACKUP

2. SCREW CORNICE TO BLOCKING AND/OR STRUCTURE @ ±16" O.C. (SEE ATTACHMENT DETAIL). PRE-DRILL OVERSIZED SCREW HOLES TO AVOID DAMAGING THE FRP AND FOR THERMAL MOVEMENT.

FILL WITH SEALANT TO MATCH.

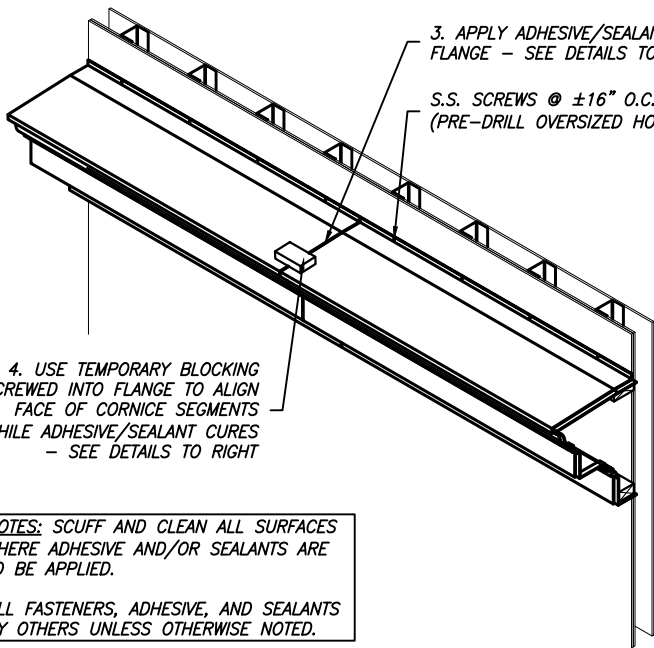


SHIPLAP FLANGE - SEE DETAILS BELOW

NOTCH IN BLOCKING FOR FLANGE CLEARANCE

3. APPLY ADHESIVE/SEALANT TO FLANGE - SEE DETAILS TO RIGHT

S.S. SCREWS @ ±16" O.C. (PRE-DRILL OVERSIZED HOLES)



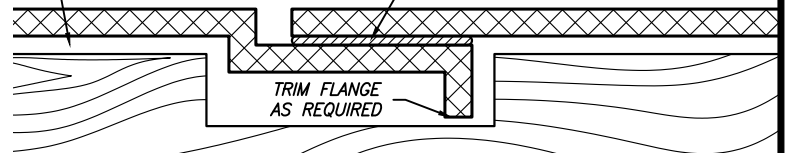
4. USE TEMPORARY BLOCKING SCREWED INTO FLANGE TO ALIGN FACE OF CORNICE SEGMENTS WHILE ADHESIVE/SEALANT CURES - SEE DETAILS TO RIGHT

NOTES: SCUFF AND CLEAN ALL SURFACES WHERE ADHESIVE AND/OR SEALANTS ARE TO BE APPLIED.

ALL FASTENERS, ADHESIVE, AND SEALANTS BY OTHERS UNLESS OTHERWISE NOTED.

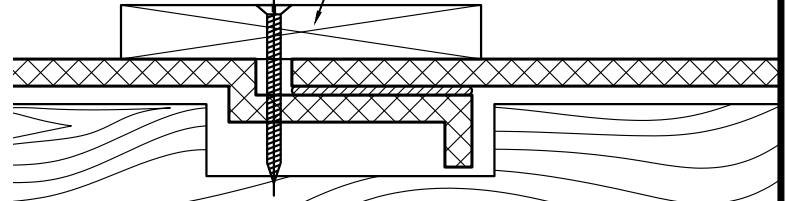
ALLOW MIN. 1/8" (NOT GREATER THAN 3/8") GAP BETWEEN FRP AND BLOCKING FOR EXPANSION AND CONTRACTION, SHIM AS REQUIRED

A. APPLY LOW MODULUS ADHESIVE/SEALANT (ULTRA-LOW MODULUS SEALANT, SIMILAR TO SIKASIL WS-290 FPS) BETWEEN CORNICE SECTIONS



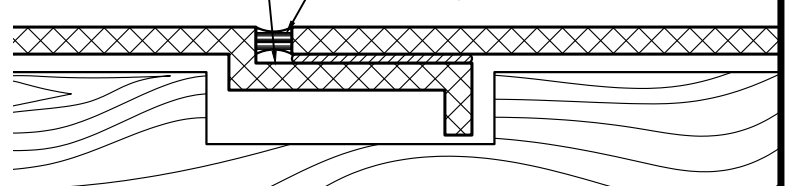
TRIM FLANGE AS REQUIRED

B. USE TEMPORARY BLOCKING SCREWED INTO FLANGE TO ALIGN FACE OF CORNICE SEGMENTS WHILE ADHESIVE CURES



BOND BREAKER, AVOID THREE POINT BOND OF SEALANT

C. FILL THE JOINT WITH COLOR MATCHED LOW MODULUS SEALANT (ULTRA-LOW MODULUS SEALANT, SIMILAR TO SIKASIL WS-290 FPS), BY OTHERS



CORNICE

SHEET NO.

SD-5

2025

TYPICAL
INSTALLATION
INSTRUCTIONS



ARCHITECTURAL FIBERGLASS, INC.

8300 BESSEMER AVE., CLEVELAND, OHIO 44127-1839
(216) 641-8300 - FAX:(216) 641-8150
www.fiberglass-afi.com